

STEPPING MOTOR FAMILY

Series 59mm (PAS, PBS) Direct Drive Stepping Motor



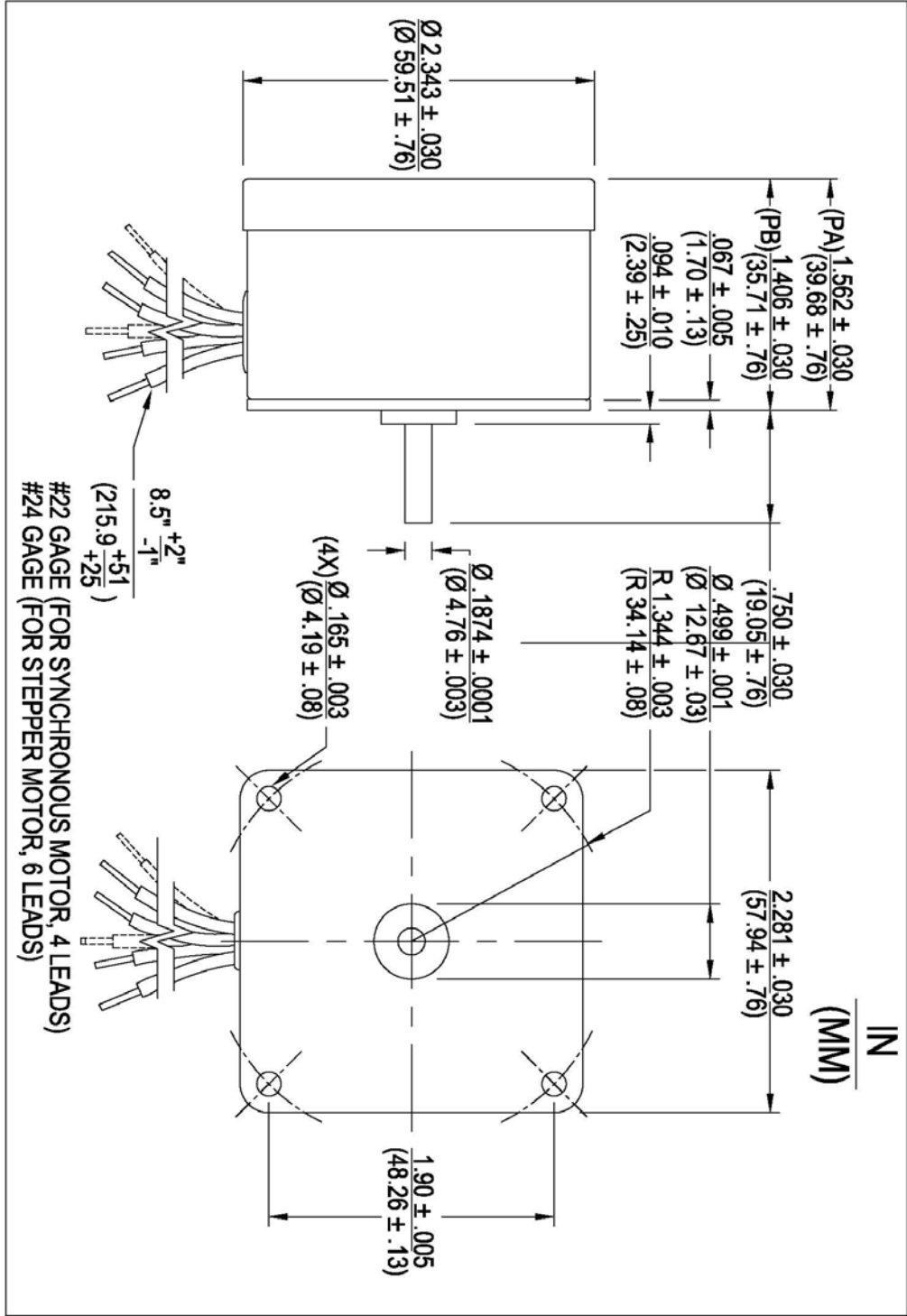
Step Angle:	7.5° & 15°
Position Accuracy:	+/- 5% max.
Number of Phases:	4 phase bifilar
Insulation Class:	Class A (105°C)
Lead Wire:	6 leads 24AWG (approx. 8.5 inches [215.9 mm])
Operation Ambient Temp:	-10°C to +40°C (approx.)
Shaft Bearing:	Sleeve Bearing
Gear Unit:	Zinc Die cast - AGMA 7 Standards with hardened steel gears
Note: Typical data subject to change without notification	

PAS and PBS series motors provide users a choice of step angles of 7.5° or 15°, standard or Hi-Torque rotors and a choice of mounting plates. Voltages other than those shown as well as 2-phase bipolar windings may be specified.

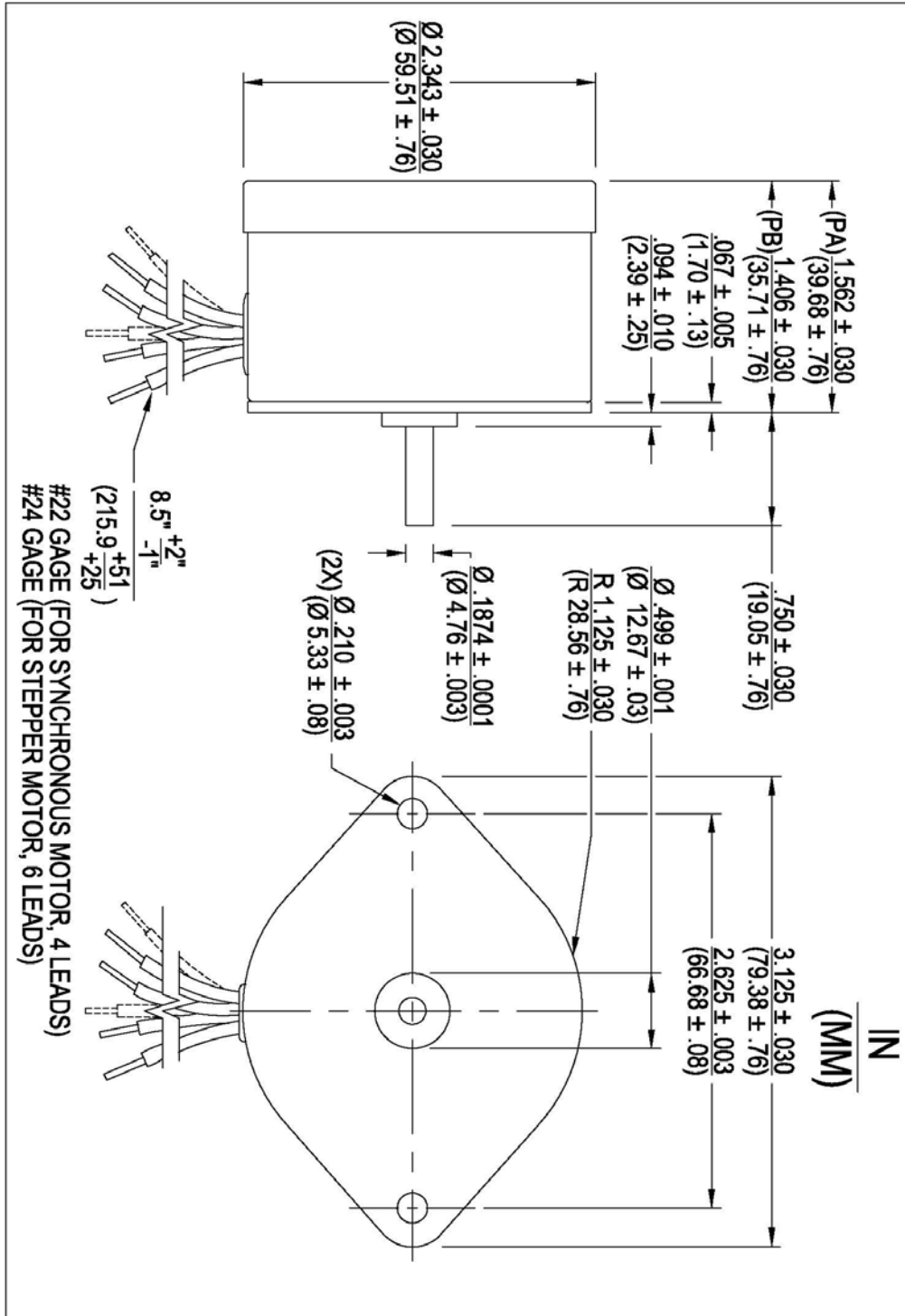
Notes:

- Sleeve bearings are standard. Ball bearings may be specified.
- The square mounting plate is standard, a diamond shaped plate may be specified.

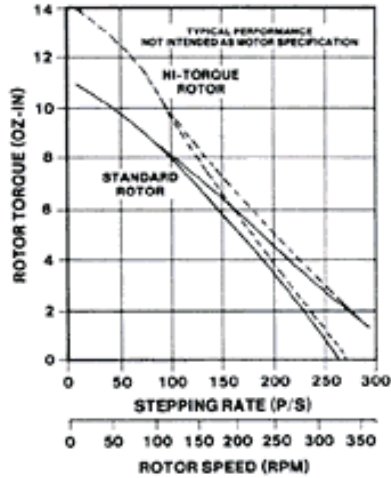
Model	Part Number	Step Angle (deg.)	Steps per Rev.	Rated Torque @ 175 p/s (oz-in)	Rated Torque @ 175 p/s (mN-m)	Rated Torque @ 4-5 p/s (oz-in)	Rated Torque @ 4-5 p/s (mN-m)	Holding Torque (oz-in) (2 Phase Energized)	Holding Torque (mN-m) (2 Phase Energized)	Output Speed (RPM)	Input Power (watts)	Nominal Voltage (VDC)	Winding Res. (ohms)	Rotor Inertia (oz-in ²)	Rotor Inertia (g-cm ²)	Full Load Temp. Rise °C	Weight (oz)	Weight (g)	Hi-Torque Rotor
PAS	3205-003	7.5	48	4.8	33.9	8.5	60	14	98.9	250	8	24	135	0.34	62.2	50	13	368.5	
PAS	3229-002	7.5	48	5.1	36	11.5	81.2	16.5	116.5	250	8	12	35	0.34	62.2	50	13	368.5	X
PBS	3207-001	15	24	3.2	22.6	5.8	41	11	77.7	500	8.5	12	32	0.19	34.8	52	13	368.5	
PBS	3231-001	15	24	3.2	22.6	5.8	41	11	77.7	500	8.5	6	7.4	0.19	34.8	52	13	368.5	
PBS	3231-002	15	24	3.2	22.6	7.3	51.5	12.3	86.9	500	8.5	12	32	0.19	34.8	52	13	368.5	X



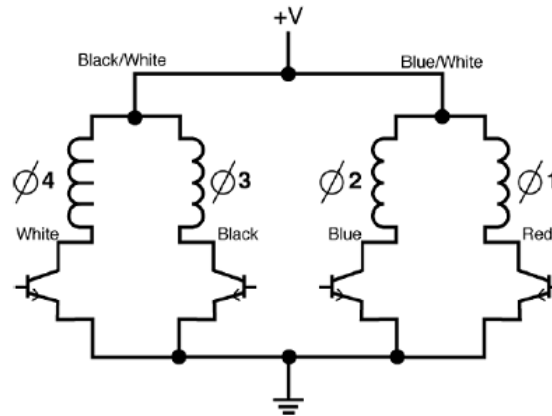
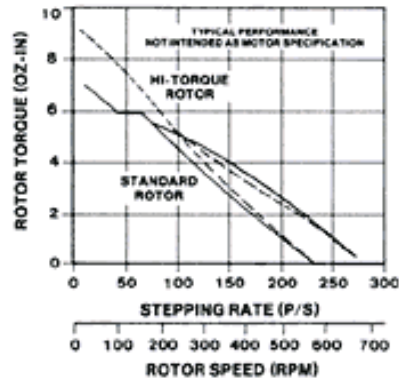
Optional Diamond Mounting:



**MODELS PAS 3205-001 AND PAS 3229-002
UNIPOLAR L/R DRIVE**



**MODELS PBS 3207-001 AND PBS 3231-002
UNIPOLAR L/R DRIVE**



	Ø4 White	Ø3 Black	Ø2 Blue	Ø1 Red	
CCW ROTATION ↑	1	0	1	0	CW ROTATION ↓
	1	0	0	1	
	0	1	0	1	
	0	1	1	0	

1 = ON, 0 = OFF

SWITCHING SEQUENCE