

STEPPING MOTOR FAMILY

Series 57mm (SCS) Direct Drive Stepping Motor



Step Angle:	7.5°
Position Accuracy:	+/- 5% max.
Number of Phases:	4 phase bifilar
Insulation Class:	Class A (105°C)
Lead Wire:	6 leads 24AWG (approx. 8.5 inches [215.9 mm])
Operation Ambient Temp:	-10°C to +40°C (approx.)
Shaft Bearing:	Sleeve Bearings Standard, ball bearings available
Note: Typical data subject to change without notification	

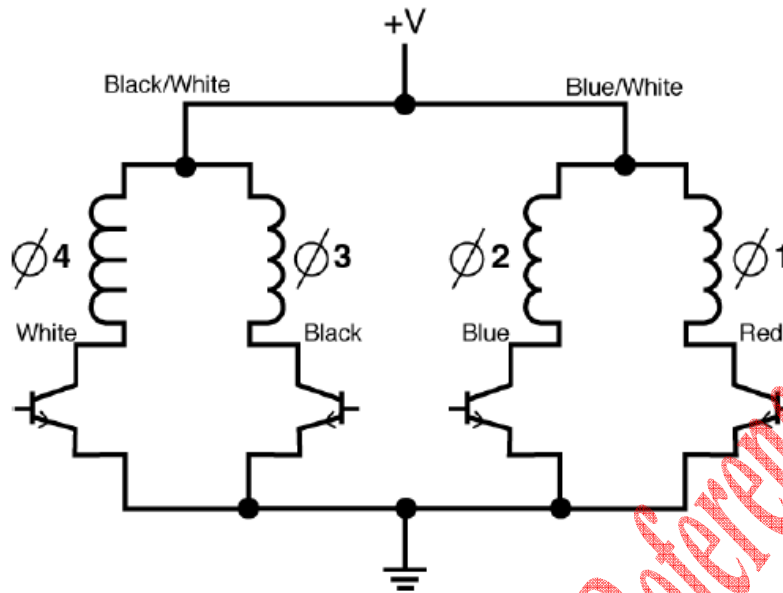
EFFICIENT LOW COST, PERMANENT MAGNET STEPPING MOTORS

Rated torque for standard models is 12.5 oz. in. [88.3 mN-m] @ 5 p/s; Hi-Torque models: 16.5 oz. in. [116.5 mN-m]. Dual sleeve bearings are standard but ball bearings as well as double ended shafts may be specified.

Notes:

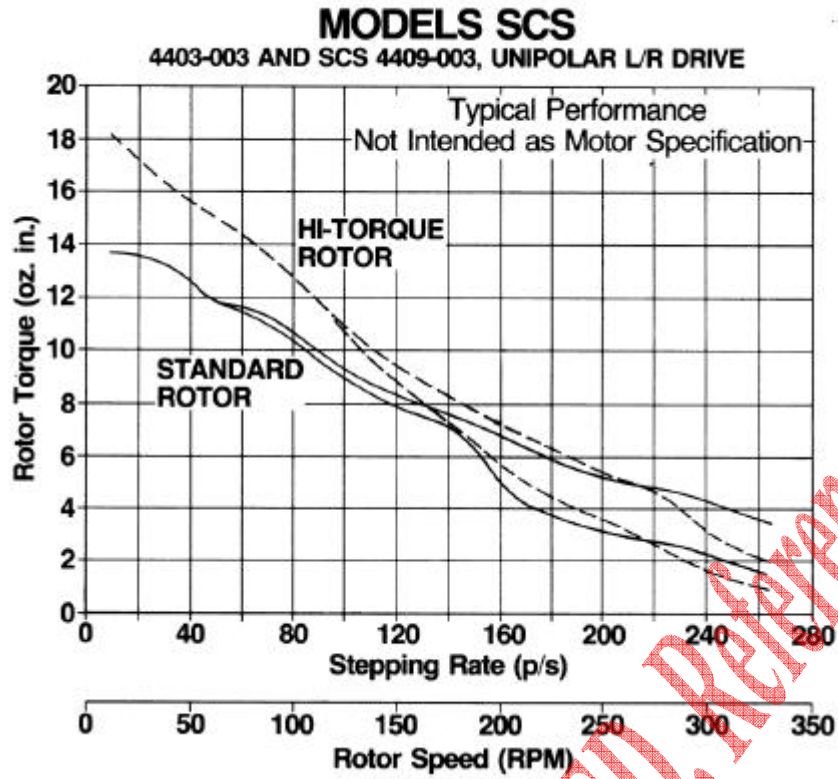
- Standard SCS motors are supplied with 4-phase, bifilar windings (6 lead wires) for 5, 6, 12, 24 VDC operation.

Model	Part Number	Step Angle (degrees)	Steps Per Revolution	Rated Torque @ 4-5 p/s (mN-m)	Rated Torque @ 4-5 p/s (oz-in)	2-Phase Holding Torque (mN-m)	2-Phase Holding Torque (oz-in)	Input Power (watts)	Nominal Voltage (volts)	Winding Resistance (ohms)	Rotor Inertia (oz-in ²)	Rotor Inertia (g-cm ²)	Temp. Rise (oC)	Weight (oz)	Weight (g)
SCS	4403-001	7.5	48	88.3	12.5	130.6	18.5	8	5	6.1	.29	53	58	11.5	326
SCS	4403-002	7.5	48	88.3	12.5	130.6	18.5	8	6	8.8	.29	53	58	11.5	326
SCS	4403-003	7.5	48	88.3	12.5	130.6	18.5	8	12	35	.29	53	58	11.5	326
SCS	4403-004	7.5	48	88.3	12.5	130.6	18.5	8	24	140	.29	53	58	11.5	326
SCS	4409-003	7.5	48	116.5	16.5	144.8	20.5	8	12	35	.29	53	58	11.5	326



	Ø4 White	Ø3 Black	Ø2 Blue	Ø1 Red	
CCW ROTATION ↑	1	0	1	0	↓ CW ROTATION
	1	0	0	1	
	0	1	0	1	
	0	1	1	0	

1 = ON, 0 = OFF
SWITCHING SEQUENCE



DISCONTINUED, Reference Only