

# AC INDUCTION MOTOR FAMILY

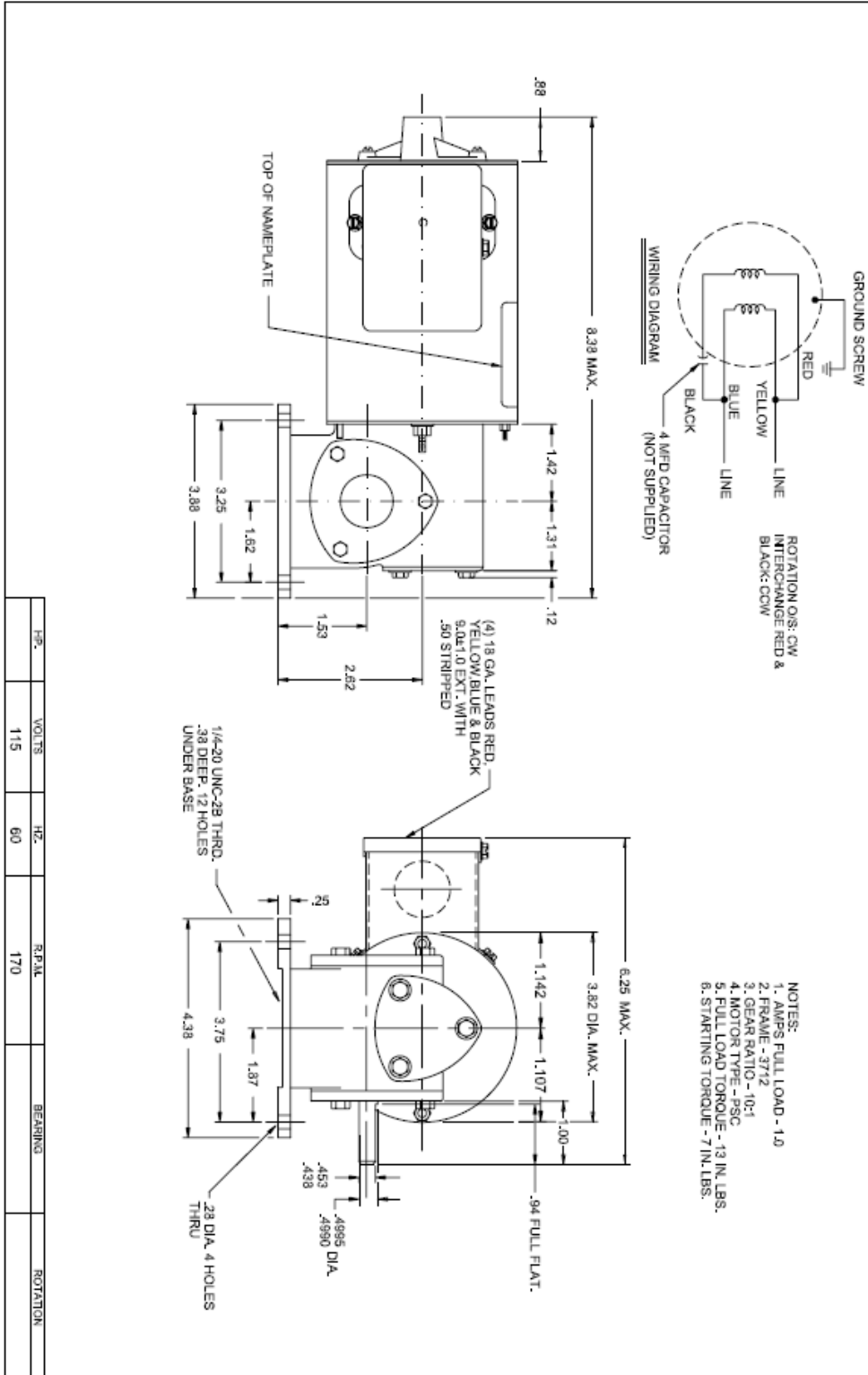
## Series K037G164086725E AC Induction Geared TENV Motor



Item:	Right Angle AC Gear Motor
Full Load Torque (In-Lbs):	13 In-Lbs
Input HP:	1/20 HP
Starting Torque (In-Lbs):	7 In-Lbs
Voltage (Vac):	115 Vac 60 Hz 105 Vac 50 Hz
Full Load Amps:	1.0 Amps
Capacitor (mfd):	4 mfd 370V (Not Supplied)
Speed (RPM):	173 RPM @ 60 Hz 137 RPM @ 50 Hz
Gear Ratio:	10:1
Rotation:	Reversible
Phase:	1 (Single Phase)
Overhung Load (Lb):	50 Lbs
Ambient Temp. Max (C/F):	40°C / 104°F
Enclosure Type:	Totally Enclosed Non-Ventilated (TENV)
Motor Type:	Permanent Split Capacitor (PSC)
Insulation Class:	Class B
Thermal Protection:	None
Bearings:	Ball Bearing
Gears:	Worm, Hardened Steel, Phenolic Output Gear
Agency Compliance:	UL Recognized (E22922) CSA Certified (LR2459)
<p>Note: Typical data subject to change without notification; Ratings shown are at 60 Hz unless noted. Gear motors are also operable at 105V, 50 Hz, with HP and RPM at 5/6 of the 60 Hz rating.</p>	

### Additional Info

- 115 and 105VAC Combined Permanent Split Capacitor Right-Angle Gearmotors
- Gearcase: Zinc Alloy
- Lubrication: TENV models grease-filled; TEFC models oil-filled
- Gears: TENV models hardened steel worm, phenolic output gear; TEFC models hardened steel worm, forged bronze output gear
- Bearings: Ball Bearing on case and motor
- Mounting: All-position except input motor shaft up
- 60/50 Hz
- UL Recognized and CSA Certified



HP.	VOLTS	HZ.	R.P.M.	BEARING	ROTATION
1/2	115	60	170		